

軸上型減速機 Shaft Mounted Reducer

- 軸上型減速機代碼說明 及 安裝方式
Product Codes of Shaft Mounted Reducer & Mounting Positions -----E01
- 軸上型減速機系統分解圖
System Drawing -----E02
- 軸上型減速機尺寸規範
Shaft Mounted Reducer series dimension ----- E03~E06

軸上型減速機產品代碼說明

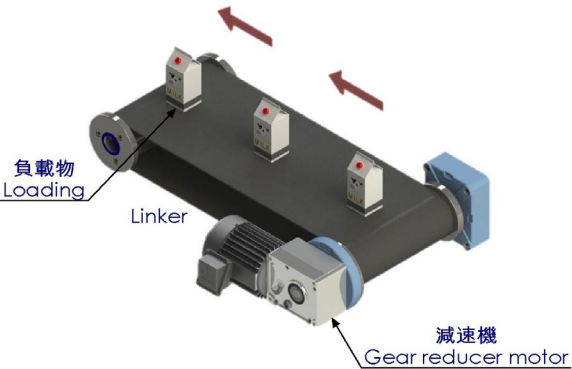
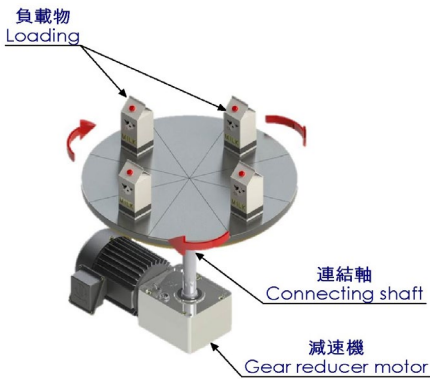
Product Codes For Shaft Mounted Reducer

S H E - 5080 - 1 - 30 - V2
 | | | |
 (1) (2) (3) (4)

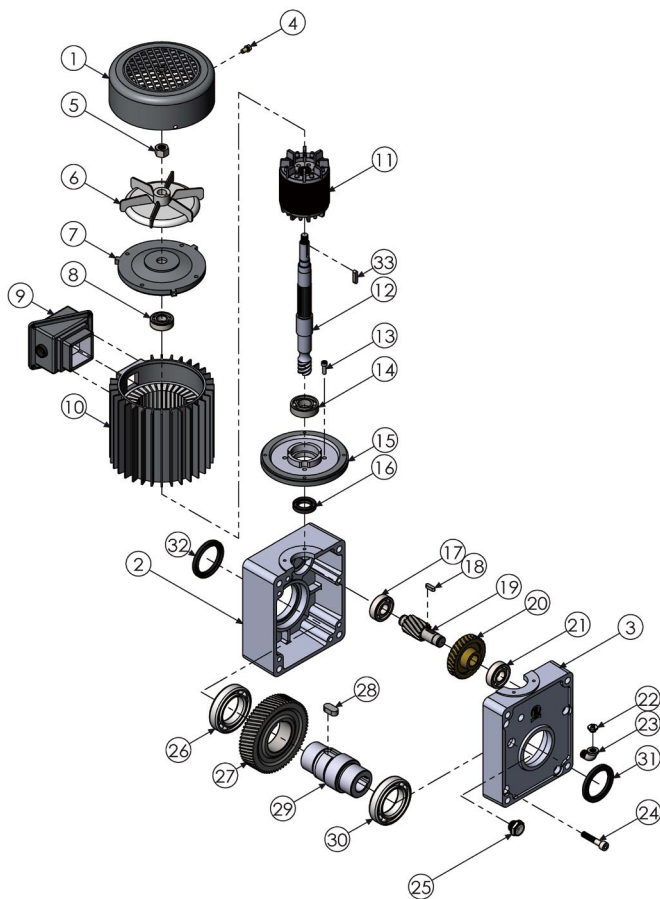
(1) 型號 Model	4070		5080		60100	
(2) 馬力 Capacity (HP/KW)	1/8 HP 100W	1/4 HP 200W	1/2 HP 400W	1 HP 750W	1 HP 750W	2 HP 1500W
(3) 減速比 Ratio	1/30 1/190		1/30 1/180		1/30 1/201	
(4) 依風扇蓋配合出力軸 (水平置) 看配線盒方向 View from fan cover	V1- 上方 Upper Side			V2- 下方 Lower Side		
	V3- 左方 Left Side			V4- 右方 Right Side		

方向	V1- 上方 UPPER SIDE	V2- 下方 LOWER SIDE	V3- 左方 LEFT SIDE	V4- 右方 RIGHT SIDE
型式 TYPE				

使用範例 Examples of applications

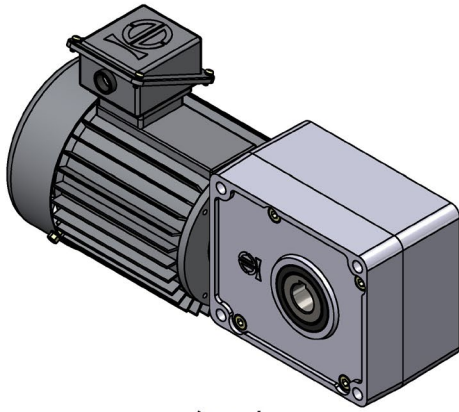
速度控制	 <p>負載物 Loading</p> <p>Linker</p> <p>減速機 Gear reducer motor</p>
可變速型運轉 Variable Design	
位置控制	 <p>負載物 Loading</p> <p>連結軸 Connecting shaft</p> <p>減速機 Gear reducer motor</p>
可定位運轉 Index Design	

軸上型減速機 系統分解圖 Shaft-Mounted Reducers System Drawing

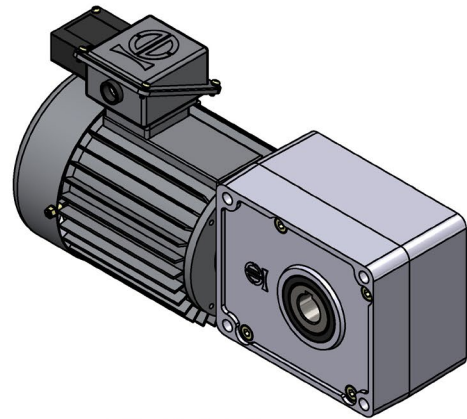


No.	零件名稱	Name of parts	No.	零件名稱	Name of parts	No.	零件名稱	Name of parts
1	風扇蓋	Fan cover	12	第一段蝸桿 馬達軸心	1 st Worm motor shaft	23	90度彎管	Quarter bend
2	外殼 -A	Case-A	13	內六角螺絲	Hex socket cap screw	24	內六角螺絲	Hex socket cap screw
3	外殼 -B	Case-B	14	軸承	Bearing	25	油鏡	Oil gauge
4	六角十字華司 面螺絲	Hex washer head philip screw	15	馬達法蘭	Motor flange	26	軸承	Bearing
5	六角螺帽	Hex nut	16	油封	Oil seal	27	第二段出力 螺旋齒輪	2 nd Output spiral gear
6	馬達風扇	Motor fan	17	軸承	Bearing	28	鍵	Key
7	馬達軸承蓋	Motor shaft cover	18	鍵	Key	29	中空出力軸	Hollow output shaft
8	軸承	Bearing	19	第二段中繼 齒軸	2 nd Gear shaft	30	軸承	Bearing
9	接線盒	Motor terminal box	20	第一段蝸輪	1 st Worm wheel	31	油封	Oil seal
10	馬達定子	Motor stator	21	軸承	Bearing	32	油封	Oil seal
11	馬達轉子	Motor rotor	22	透氣蓋	Ventilate plug	33	鍵	Key

SHE-4070 軸上型減速機 外型尺寸圖 SHE-4070 Shaft-Mounted Reducer Dimension

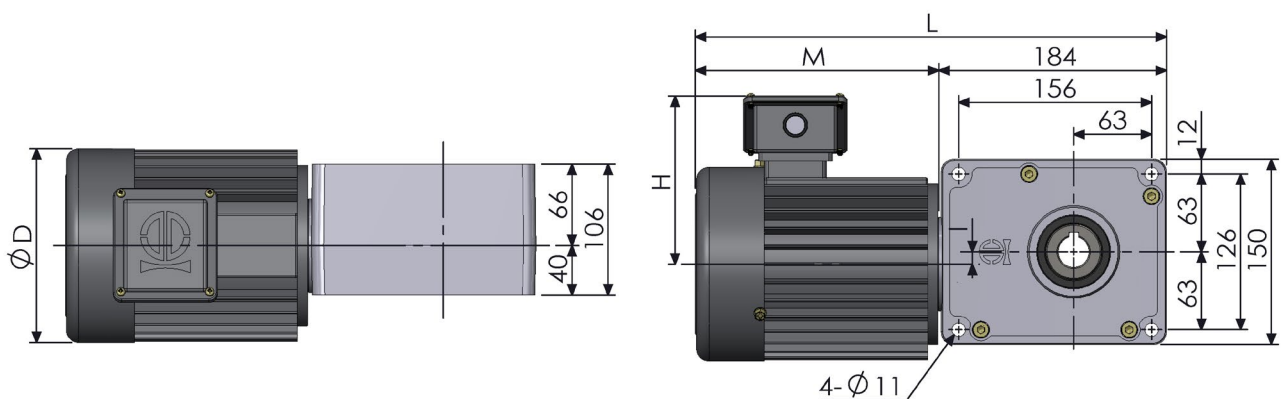
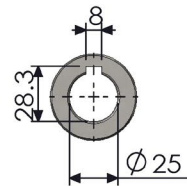


一般型
SHE-4070#
Standard Type



附剎車型
SHE-4070-B#
Brake Type

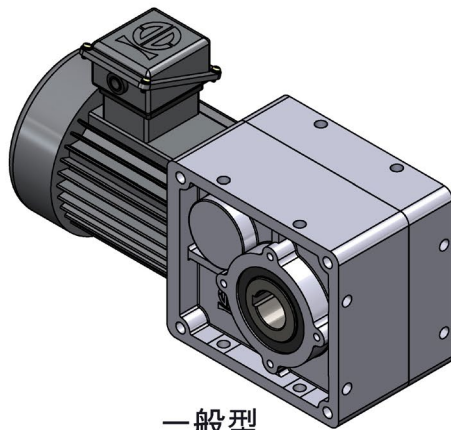
出力孔
Output Bore



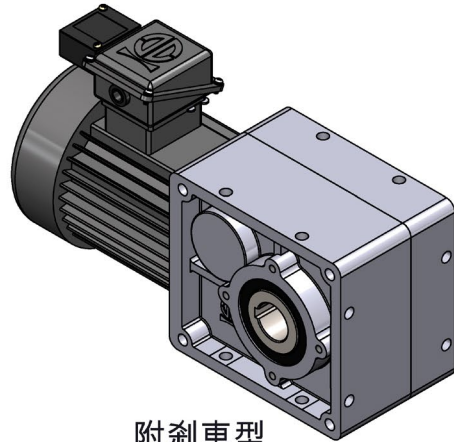
尺寸表 Dimension (單位：mm)

型號 Model	馬力 HP (4P)	減速比 Ratio	M	L	D	H	重量 (Kg)
4070	1/8	1/30 ~ 1/190	157	341	129	116	12.5
	1/4		177	361	129	116	13.5
	1/2		212	396	147	130.5	15

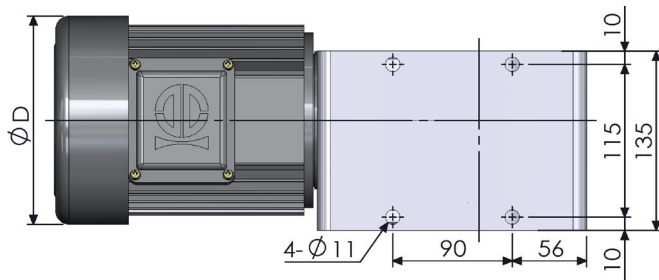
SHE-5080 軸上型減速機 外型尺寸圖 SHE-5080 Shaft-Mounted Reducer Dimension



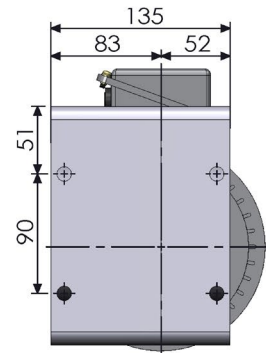
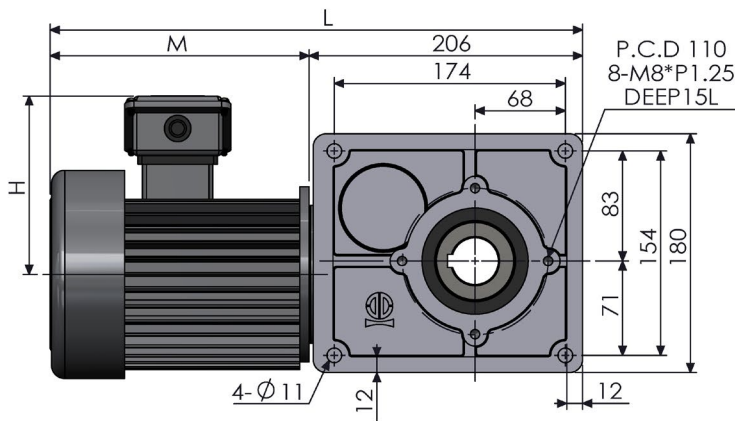
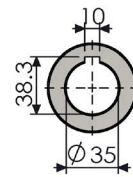
一般型
SHE-5080#
Standard Type



附剎車型
SHE-5080-B#
Brake Type



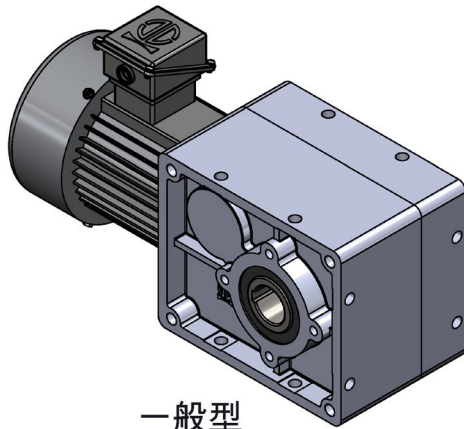
出力孔
Output Bore



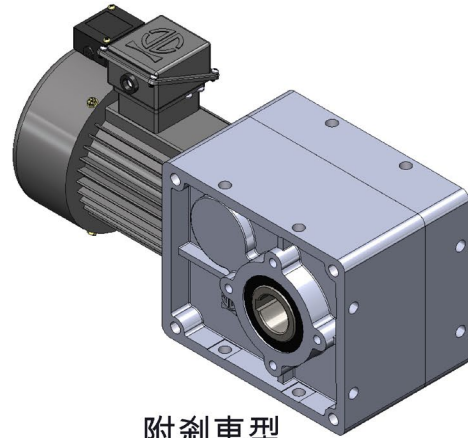
尺寸表 Dimension (單位: mm)

型號 Model	馬力 HP (4P)	減速比 Ratio	M	L	D	H	重量 (Kg)
5080	1/2	1/30 ~ 1/180	212	418	147	130.5	21
	1		215.5	421.5	173	141	23
	2		252	458	192	148.25	28

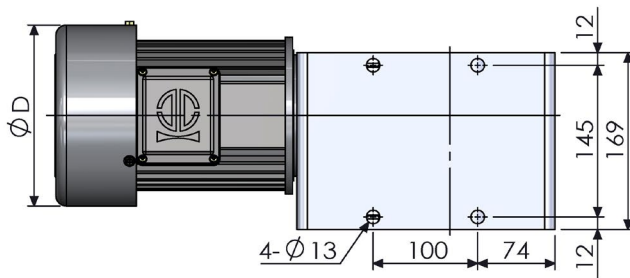
SHE-60100 軸上型減速機 外型尺寸圖 SHE-60100 Shaft-Mounted Reducer Dimension



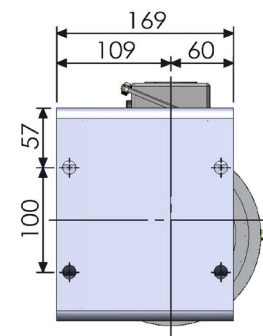
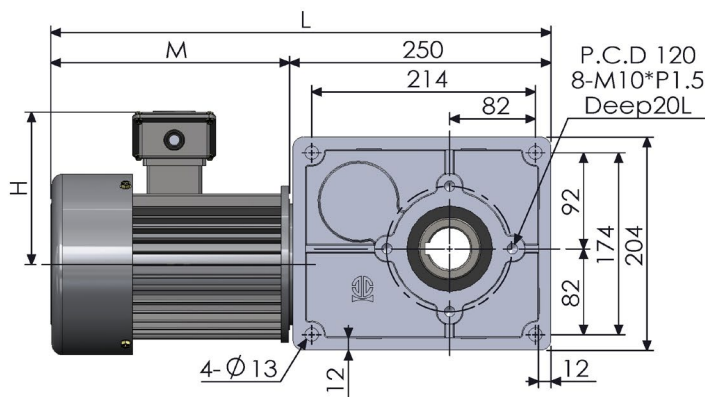
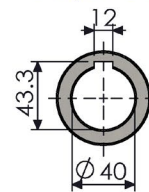
一般型
SHE-60100#
Standard Type



附剎車型
SHE-60100-B#
Brake Type



出力孔
Output Bore



尺寸表 Dimension (單位: mm)

型號 Model	馬力 HP (4P)	減速比 Ratio	M	L	D	H	重量 (Kg)
60100	1	1/30 ~ 1/201	215.5	465.5	173	141	30
	2		252	503	192	151	33
	3		262	513	192	148	40