

福星牌變速機



FURE SHING VERSATILE SPEED VARIATORS



緩衝裝置內臚

久弘機械實業有限公司

KU HUNG MECHANICAL INDUSTRIAL CO., LTD.

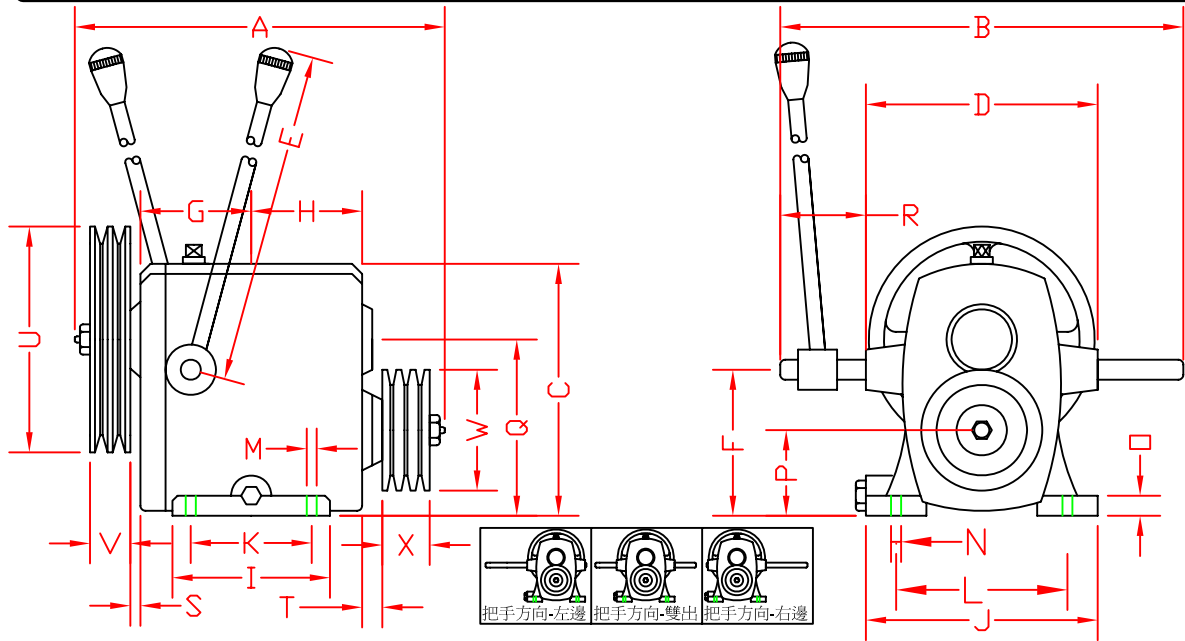


緩衝式變速機

BUFFER VARIATOR

齒輪四段變速機

4-STEP GEAR SPEED DEVICE



形式 TYPE	HP	緩衝式變速機規格 Specifications for Buffer Variators											
		A	B	C	D	E	F	G	H	I	J	K	L
FS-401	1/4-1/2	260	210	150	110	220	82	75	75	102	125	80	106
FS-402	1/2-1 1/2	300	300	200	160	360	116	85	85	122	182	95	150
FS-403	1-3	360	300	227	190	360	130	107	107	155	200	120	170
FS-405	3-5	420	350	250	200	360	145	120	120	170	220	135	190
FS-410	7 1/2-10	495	400	285	240	460	164	137	137	200	265	155	210
FS-415	15-20	580	458	335	275	460	201	152	152	225	310	175	260
		M	N	□	P	Q	R	S	T	U	V	W	X
FS-401	1/4-1/2	∅10	∅10	10	47	94	50	11	11	∅15	30	∅19	40
FS-402	1/2-1 1/2	∅11	∅11	16	66	138	70	8	16	∅180	A2	∅100	A3
FS-403	1-3	∅11	∅11	20	77	158	55	8	14	∅190	A3	∅127	B3
FS-405	3-5	∅14	∅14	20	85	175	75	12	12	∅254	B3	∅127	B4
FS-410	7 1/2-10	∅19	∅19	20	94	202	80	16	16	∅355	B3	∅150	B5
FS-415	15-20	∅22	∅35	25	115	241	90	30	30	∅405	B3	∅150	B5

FS401,FS402 變速機				FS403 變速機			
檔位	變速比 Rate of Variation	出力軸回轉數參考表 Number of Turning Rounds for the Output Axis.		檔位	變速比 Rate of Variation	出力軸回轉數參考表 Number of Turning Rounds for the Output Axis.	
		入力軸最高850rpm 850rpm, highest for the input axis.	入力軸最低500rpm 500rpm, highest for the input axis.			入力軸最高850rpm 850rpm, highest for the input axis.	入力軸最低500rpm 500rpm, highest for the input axis.
0	0	0	0	0	0	0	0
1	0.5	425rpm	250rpm	1	0.5	425rpm	250rpm
2	0.8	680rpm	400rpm	2	0.9	765rpm	450rpm
3	1.25	1062rpm	625rpm	3	1.4	1190rpm	700rpm
4	2.0	1700rpm	1000rpm	4	2.0	1700rpm	1000rpm
FS405 變速機				FS410,FS415 變速機			
檔位	變速比 Rate of Variation	入力軸最高750rpm 750rpm, highest for the input axis.		檔位	變速比 Rate of Variation	入力軸最高750rpm 750rpm, highest for the input axis.	
		入力軸最低400rpm 400rpm, highest for the input axis.	入力軸最低300rpm 300rpm, highest for the input axis.			入力軸最高750rpm 750rpm, highest for the input axis.	入力軸最低300rpm 300rpm, highest for the input axis.
0	0	0	0	0	0	0	0
1	0.5	375rpm	200rpm	1	0.5	375rpm	150rpm
2	0.85	680rpm	340rpm	2	0.85	637rpm	255rpm
3	1.25	1062rpm	500rpm	3	1.2	900rpm	360rpm
4	1.8	1350rpm	720rpm	4	1.6	1200rpm	480rpm
備註	FS402 : 1/2HP~1 1/2HP 變速機重量21kg FS403 : 1HP~3HP 變速機重量31kg FS405 : 3HP~5HP 變速機重量43kg FS410 : 7 1/2HP~10HP 變速機重量72.5kg FS415 : 15HP~20HP 變速機重量98kg						



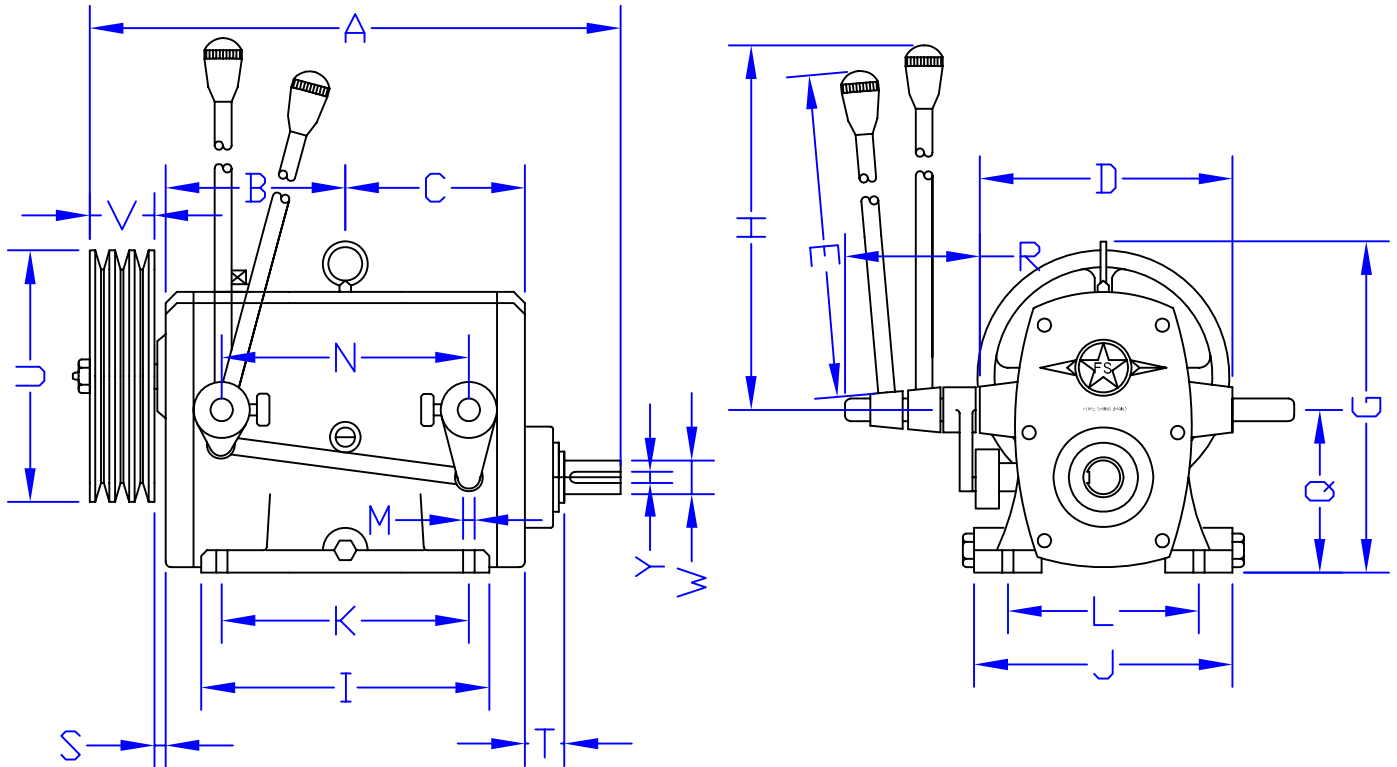
FURE SHING
福星牌

緩衝式變速機

BUFFER VARIATOR

齒輪八段變速機

8-STEP GEAR SPEED DEVICE



形式 TYPE	HP	緩衝式變速機規格 Specifications for Buffer Variators											
		A	B	C	D	E	F	G	H	I	J	K	L
FS-802	1/2-1 1/2	140	142	142	165	300	116	200	400	225	180	190	155
FS-803	1-3	495	165	165	193	300	134	230	400	260	205	220	160
FS-805	3-5	555	190	190	220	400	150	327	500	310	240	250	200
FS-810	7 1/2-10												
	M	N	□	P	Q	R	S	T	U	V	W	X	Y
FS-802	11	176	16	66	138	160	11	45	∅180	A2	∅28	55	5/16"
FS-803	11	207	24	77	158	210	8	50	∅190	A3	∅32	55	5/16"
FS-805	14	246	25	85	180	165	14	67	∅254	B3	∅35	58	3/8"
FS-810													

FS八段入力軸迴轉速參考表

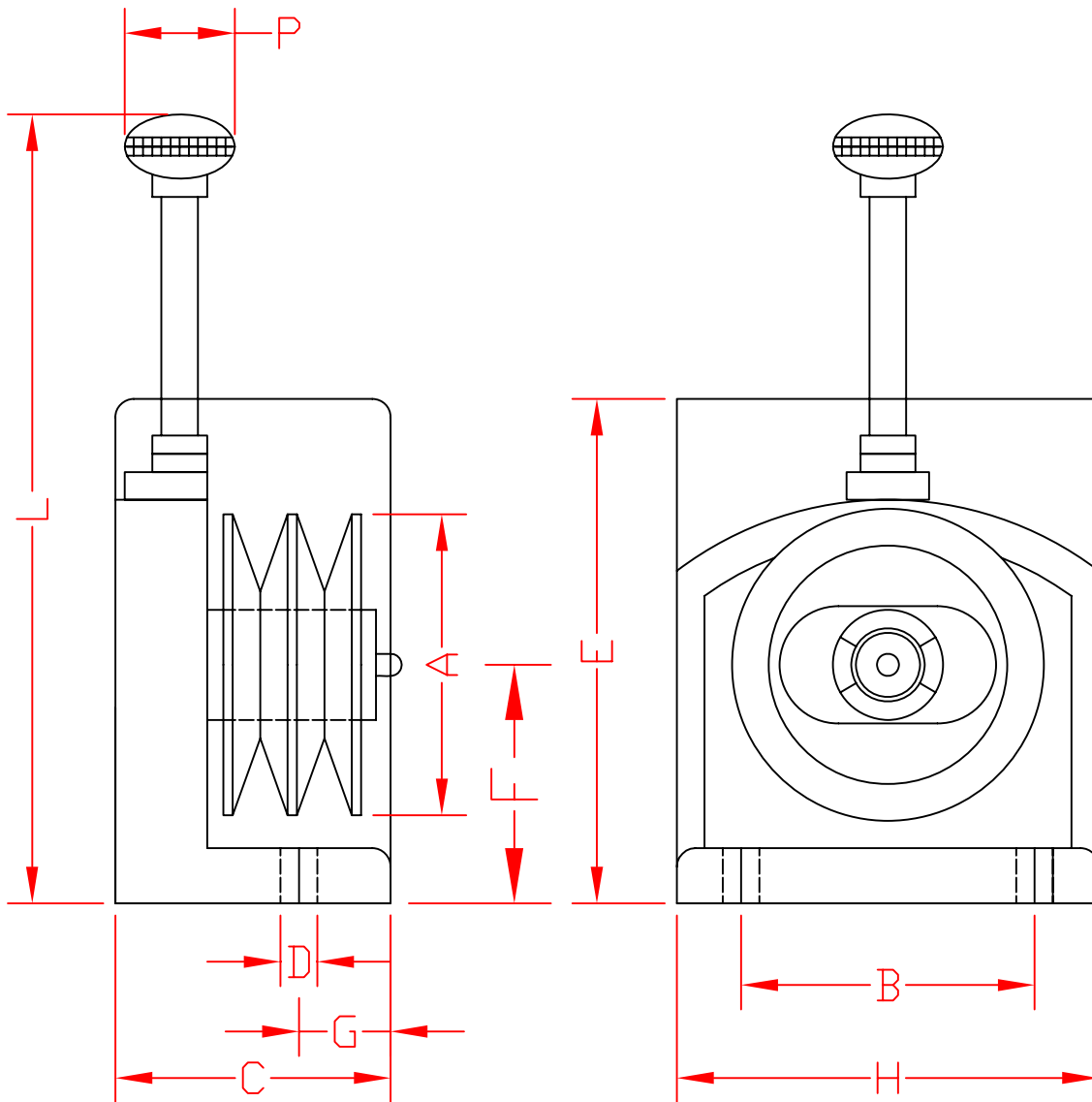
形式 TYPE	入力軸最高回轉速 Turning Rounds, highest for the input Axis.	入力軸最低回轉速 Turning Rounds, lowest for the input Axis.
FS-802	850	500
FS-803	850	500
FS-805	750	400
FS-810	750	300

形式 TYPE	比數									重量 KG
	0	1	2	3	4	5	6	7	8	
FS-802	0	0.113	0.181	0.284	0.454	0.5	0.8	1.25	2.00	36
FS-803	0	0.113	0.204	0.318	0.454	0.5	0.9	1.40	2.00	49
FS-805	0	0.107	0.18	0.267	0.385	0.5	0.8	1.25	1.80	75
FS-810	0	0.107	0.181	0.272	0.363	0.5	0.8	1.20	1.60	



FURE SHING
福星牌

LB無段變速機



形式 TYPE	LB無段變速機規格 Specifications										
	A	B	C	D	E	F	G	H	I	J	K
LB 140	140	120	140	12	235	118	65	185	25	118	355
LB 160	170	140	153	12	260	138	65	222	25	138	440

形式 TYPE	V皮帶 V belt	變速比 Rate	馬達每分1800鐘, 馬達V型皮帶輪外徑於下記時之傳達馬力 1800 Turning Rounds per minute for the Motor, the Various Amounts of Horse Power Trsmitted at Various Externat Diameters for the V Belt.		重量 kg
			馬達V皮帶輪外徑 Diameters for the V_belt of the Motor	傳達馬力 Hores Power Transmitted	
LB 140	A	1:4	50-75 (2-3)	0.2-0.4 ($\frac{1}{4}$ - $\frac{1}{2}$)	7.6
LB 160	A	1:4	63-83 ($2\frac{1}{2}$ - $3\frac{1}{4}$)	0.4-0.55 ($\frac{1}{2}$ - $\frac{3}{4}$)	
LB 160	B	1:2	83-125 (4-6)	0.55-0.75 ($\frac{3}{4}$ -1)	



福星牌變速機

特別說明SPECIAL ILLUSTRATION:

1. FS-415皮帶輪按使用速度配製The device of FS-415 belt depend upon the speeds that you need .
2. 八段變速前四段緩衝, 後快慢兩段須停車The buffer variator os prepare for the first 4 step speed of 8 speeds . For the last two step speed , the motor must be switched off.
3. 2段, 3段, 6段或其他比數為特殊規格, 歡迎訂做For the special devices of 2 step speed, 3 step speed, 6 step speed and others , you are welcome if you need any service .
4. 最初使用300小時洗淨內部換新油, 以後每操作1000小時再換新油一次Clean inside of this machine after the first 300 hours use of it . Later change new machine oil very 1000 hours .

特點 Characteristics

1. 使用高級材料, 精密齒輪, 高周波熱處理, 精密研磨, 嚴格品質管制. High quality material used , complicated gears , high frequency heat treatment , well-ground , strict quality control .
2. 體積小, 重量輕, 外型美觀, 速度正確壽命長, 不易故障. small in simention light in weight , pleasant outappearance , correct speed , endureable , not easy to break .
3. 特殊設計空檔排置一檔後面使用便利, 變速桿可左右方向裝置, 任意變換 specially designed neutral which is next to first gear , easy to operate ; gear shift lever can be set in the right or left direction as desired .
4. 機械運轉中輕車即可輕鬆任意變速 easy to shift to desired speed in slow revolution

特能 Function

1. 變速主軸, 係採用SCM21鋼鐵, 滲炭燒入, 硬度特強, 有耐久性, 任何情況之下使用都能堅固如常The main axle made of SCM21 carborn steel figures extra hardness , endurance & strong performance in all conditions .
2. 小型, 輕巧, 裝配容易, 所需空間極小, 能適用於任何機械
The transmission , concise & compact in bery small space , can be mounted all kinds of machine in a easy job.
3. 齒輪另件, 全部均經精密加工, 細心組合而成, 運轉中安靜無聲Gears and componants are so well-designed and organized without sound during running.

用途 Most suitable for your machines

1. 工作機械 - 車床, 刨床, 沖床Work Machine - Lathe / Plane Machine / Punch Machine
2. 交通機械 Communication - Chain / Cable camnier / Loader / Motor-junks
3. 起重機械 Crane / Fork Lift
4. 食品機械 Food Machine - Press Machine / Press for Vegetable-oil / Mixer
5. 木工機械 Wood Machine - Band Saw / Milling Machine
6. 建築機械 Construction Machine - Mixer / Excavator /Bulldozer / Vibrator / Hoist crane
7. 化工, 紡織等動力機械, 均可安裝使用Chemical & Textile Machinery

東 良 機 器 工 廠

TONG LIANG MACHINERY WORKS

久 弘 機 械 實 業 有 限 公 司

KU HUNG MECHANICAL INDUSTRIAL CO., LTD.

台北縣三重市仁愛街245巷62號

No. 62, Lane 245, Ren-ai St., Sanchong City, Taipei County 241, Taiwan

TEL: 886-2-29810009 , 29718348 , 29807537-8 FAX:886-2-29849525

<http://www.kuhung.com.tw> www.kuhung.com kuhung@kuhung.com